



4141 MacArthur Blvd. • Newport Beach, CA 92660

866-497-3700
Fax 800-411-9722
www.glidewell dental.com

- 1. Carefully package your case, including this Rx, and tape box securely closed.
2. For in-lab working time or to schedule overnight shipping pickup, call us at 866-497-3700.

Dr. Name _____

Acct. # _____ Phone # _____

E-mail _____

Address _____

City / State / Zip

Patient Name _____ Male Female

First

Last

Deliver by 5 p.m. on _____ Call before starting case



Upper and lower impressions or models with bite registration required (CHOOSE ONE)

Three Clear-Lock Retainers

Upper Lower

Six Clear-Lock Retainers

(3 upper, 3 lower)

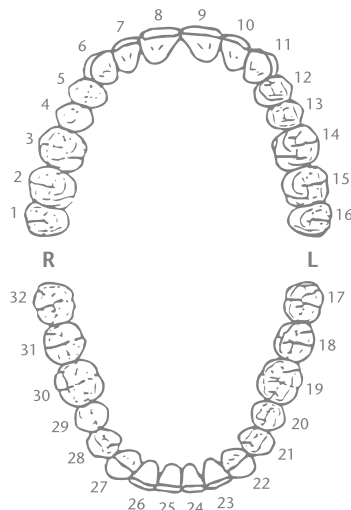


All Restorations Made in the USA

Signature _____ License # _____

(see reverse for limited warranty details)

©2012 Glidewell Laboratories



Enclosed with Case

Impressions Models Bite

Other: _____

Laboratory Use Only

By _____ Mail _____

GL-2898-0512

Clear-Lock

Retainers for Life™



**GLIDEWELL
LABORATORIES**

Premium Products - Outstanding Value

- Convenient replacement service for retainers that includes digital file storage of the patient's models for 30 years
- Each retainer is pressure-formed with a clear, BPA-free copolyester, 0.8 mm disc to the patient's model for optimum fit
- Replacement retainers can be reordered from the digitally stored patient's data via a faxed or e-mailed dentist Rx

Clear-Lock

Retainers for Life™

Clear-Lock Retainers for Life™ provide a more convenient service for your patients who have had orthodontic treatment. With each Clear-Lock retainer you prescribe, we will digitally scan your patient's upper and lower models and store the 3-D digital data for 30 years. When a patient loses or damages all his or her retainers, replacement retainers can be reordered from the patient's digitally stored data via your faxed or e-mailed prescription. This frees the patient from having to make a return office visit for impressions. It's a great service even orthodontists don't provide!

Each Clear-Lock prescription comes with either three single-arch retainers or one set of six retainers, so the patient always has spares on hand. Retainers are fabricated from 0.8 mm or 1.0 mm clear, biocompatible and BPA-free copolyester and custom thermoformed to the patient's model(s) for optimum fit.



■ **three single retainers**

■ **six single retainers**

**See Clinical Technique and Patient
Care Instructions on back inside cover**

www.glidewell dental.com ■ 866-497-3700

Clinical Technique for Clear-Lock Retainers



STEP 1: Using the full-arch impression tray of your choice, take an impression of the patient's upper arch.



STEP 2: Take an impression of the patient's lower arch. Polyvinyl siloxane is preferred, but alginate substitutes will work as well.



STEP 3: When you send the patient's models to the lab, we will digitally scan them and store the patient's 3-D digital data for 30 years.



STEP 4: Seat retainer(s) and evaluate fit and retention. Instruct patient on proper removal of the device.

Patient Care



When removing the appliance, grasp with both hands. To prevent breakage, do NOT warp or flex the appliance.



Rinse with warm water before insertion and after wearing. Gently brush the appliance using a soft toothbrush and toothpaste. If necessary, soak in denture cleanser for up to 10 minutes.



GLIDEWELL LABORATORIES

4141 MacArthur Blvd. • Newport Beach, CA 92660

PRSRT STD
US POSTAGE

PAID

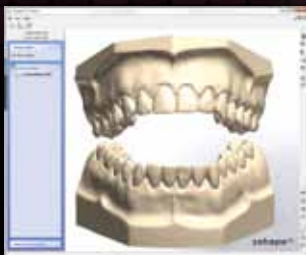
LEBANON JUNCTION KY
PERMIT NO 468

Visit www.glidewelldental.com
or call 866-497-3700

Clear-Lock

Retainers for Life™

Clear-Lock Retainers for Life is a convenient lifetime replacement service for retainers that includes digital file storage of the patient's models. When the service is prescribed, the patient's upper and lower models will be scanned and the 3-D digital data stored for 30 years.



GL-2898-0512